

**2. Viessmann Rennrodel-Weltcup**  
**1. Viessmann Team-Staffel-Weltcup presented by BMW**  
**Whistler, BC Canada**  
**27. November - 1. Dezember 2018**

**2<sup>nd</sup> Viessmann Luge World Cup**  
**1<sup>st</sup> Viessmann Team Relay World Cup presented by BMW**  
**Whistler, BC Canada**  
**November 27 – December 1, 2018**

Veranstalter/ Sanctioning body:	Internationaler Rennrodelverband (FIL) International Luge Federation (FIL)	
Ausrichter/ Organizer:	Luge Canada 250, 149 Canada Olympic Road SW Calgary, Alberta T3B 6B7 Canada	
Durchführung/ Local Organizer:	Luge Canada and Whistler Sliding Centre	
Repräsentant der FIL/ FIL Representative:	Claire De Negro	USA
Sportdirektorin der FIL/ FIL Sport Director:	Maria Luise Rainer	FIL
Präsident der Jury/ President of Jury:	Atis Strenga	LAT
Mitglieder der Jury/ Jury members:	Ken Yonemura Dana Krause	USA CAN
Technischer Delegierter der FIL/ Technical Delegate of the FIL:	Christian Eigentler	FIL
Zweiter Technischer Delegierter/ Second Technical Delegate:	Dave Clay Michael Sonntag	CAN CAN
OK-Präsident/ President of OC:	Suzy Judson	
Gesamtleiter/ Event Manager:	Cindy Nield	



# VISSMANN LUGE WORLD CUP

WHISTLER | 2018



- Rennleiter/  
Race Director: Jim Watts CAN
- Bahnleiter/  
Chief of Track: Robb Zirnhelt
- Pressechef/  
Chief of Press: Chris Dornan
- Rennarzt/  
Race doctor: Während des offiziellen Wettkampfs muss ein Rennarzt zur Verfügung stehen.  
A race physician will be on duty during competitions.
- Medizinischer Dienst/  
Medical service: Während des gesamten Trainings und der Wettkämpfe sind Sanitäter an der Bahn.  
Emergency Medical Staff are on duty during all training sessions and competitions.
- Nennungen/  
Registration: Online über die FIL-Website [www.fil-luge.org](http://www.fil-luge.org) (Startseite: „Mitglieder-Sektion/Login Anmeldung zu den Wettbewerben“) oder direkt unter [http://www.mall-nauders.at/fil\\_registration/](http://www.mall-nauders.at/fil_registration/)
- Online through the FIL website [www.fil-luge.org](http://www.fil-luge.org) (welcome page: „members section /login: registration for competitions“) or directly under [http://www.mall-nauders.at/fil\\_registration/](http://www.mall-nauders.at/fil_registration/)*
- Meldeschluss/  
Closing date: Entsprechend der im Online Registrierungssystem genannten Fristen  
*According to the time limits given in the online registration tool*
- Nenngeld/  
Entry fees: € 15,- pro Einsitzer  
€ 25,- pro Doppelsitzer  
Erfolgt keine Meldung über das Online Registrierungssystem, wird ein erhöhtes Nenngeld in Höhe von € 50,- (einheitlich pro Einsitzer bzw. Doppelsitzer) erhoben.  
Für jeden gemeldeten Athleten wird Nenngeld entrichtet.
- € 15,- per single  
€ 25,- per doubles  
In case of missing online registration an increased entry fee will be charged (same amount of 50.- € per single or doubles team).  
Registration fee has to be paid for every registered athlete.*





# VISSMANN LUGE WORLD CUP

WHISTLER | 2018



## Versicherungsschutz/

Insurance: Eine gültige Unfallversicherung ist für jeden Teilnehmer Pflicht. Mit der Nennung bestätigt der Nationalverband den Abschluss dieser Versicherung. Veranstalter und Ausrichter übernehmen keine Haftung.

It is the responsibility of each federation to ensure that all of its athletes have valid medical insurance. The organizer cannot be held liable for any accident or damage that may occur during the event.

## Reglement/

Regulations: IRO, Ausgabe 2018  
IRO, edition 2018

## Rennstrecke/

Race track: Künstlich vereiste Bob und Rodelbahn in Whistler, Whistler Sliding Centre  
Artificial Refrigerated Track Whistler, Whistler Sliding Centre

## Starthöhen/

Start heights: Herren Einsitzer / Men's singles: Herrenstart / Men's start  
Damen Einsitzer / Women's singles: Damenstart / Women's start  
Doppelsitzer / Doubles: Doppelsitzer-Start / Doubles start

## Preise/

Prizes: Medaillen für 1 - 3  
Medals for rank 1 – 3

Geschenke für Rang 1 – 6  
Gifts for rank 1 - 6

## Contact Information:

Anschriften mit Telefonnummern (Mail, Mobil) /  
Addresses with phone numbers (e-mail, mobile):

- Gesamtleiter/  
Event Manager Cindy Nield [events@luge.ca](mailto:events@luge.ca) 403-202-6860
- Organisationsbüro /  
Organization office Tim Farstad [tfarstad@luge.ca](mailto:tfarstad@luge.ca) 403-202-6581
- Bahnchef/  
Chief of Track Robb Zirnhelt [rzirnhelt@whistlersportlegacies.com](mailto:rzirnhelt@whistlersportlegacies.com)  
604-967-1827
- Pressechef/  
Chief of Press Chris Dornan [hpprchrish@shaw.ca](mailto:hpprchrish@shaw.ca) 403-620-8731



- Quartier-Reservierung/  
Organization of accommodation:

The [Tourism Whistler](#) Group Sales team are on stand-by to assist you in securing team accommodation and transfers at the very best rates. For a personalized and comprehensive proposal, call the team today on 1.604.966.3215 or send an email to [groups@whistler.com](mailto:groups@whistler.com).

**Fairmont Chateau Whistler - [Friends and Family Rate](#)**

Click the link above to make your reservation or call the In House Reservations Department at 1-800-606-8244 to make your reservation - quote Luge Canada Friends & Family group code 1118LUGE in order to receive the group rates.

**The Whistler Athletes' Lodge** – please see the attached sheet for more information and rates.

**Car Rental Information:**

- [Enterprise Rent A Car](#) or [National](#) | Booking Code – 5CALUGE
- [Driving Force](#) | Booking Code – LUGE2018

**Besonderheiten/Special features:**

- Veranstaltungen für Athleten, Teilnehmer/  
Arrangements for athletes and participants:

After Race Celebration – Saturday, December 1  
Location - TBA

- Hinweise auf Zeremonien/  
Remarks regarding ceremonies:

Award ceremonies will take place at the end of each race day at the Finish Dock. All teams are expected to attend.

**Vorläufiger Zeitplan / Temporary Event Schedule:**

*\*Subject to change*

<b>Date:</b>		<b>Time:</b>	<b>Location:</b>
Tuesday, November 27, 2018	<ul style="list-style-type: none"> <li>• Waiver Sign</li> <li>• Track Walk</li> <li>• 1st Team Captain's Meeting/ Mannschaftsführersitzung Welcome Reception</li> </ul>	<ul style="list-style-type: none"> <li>• 11:00 – 15:00</li> <li>• 11:00 – 15:00</li> <li>• 19:00</li> </ul>	<ul style="list-style-type: none"> <li>• Guest Services</li> <li>• Guest Services</li> </ul>
Wednesday, November 28, 2018	<ul style="list-style-type: none"> <li>• Training</li> <li>• 2nd Team Captain's Meeting and draw/ Mannschaftsführersitzung u. Auslosung</li> </ul>	<ul style="list-style-type: none"> <li>• 08:00</li> <li>• 19:30</li> </ul>	<ul style="list-style-type: none"> <li>• Guest Services</li> </ul>
Thursday, November 29, 2018	<ul style="list-style-type: none"> <li>• Training</li> <li>• Training – Seeded Group</li> <li>• Nation's Cup</li> <li>• Awards</li> </ul>	<ul style="list-style-type: none"> <li>• 08:00</li> <li>• 17:00</li> <li>• 18:30</li> </ul>	<ul style="list-style-type: none"> <li>• Finish Dock</li> </ul>
Friday, November 30, 2018	<ul style="list-style-type: none"> <li>• WC – Doubles (Run 1)</li> <li>• WC – Doubles (Run 2)</li> <li>• WC – Men (Run 1)</li> <li>• WC – Men (Run 2)</li> <li>• Awards</li> </ul>	<ul style="list-style-type: none"> <li>• 14:00</li> <li>• 15:20</li> <li>• 16:40</li> <li>• 18:15</li> </ul>	<ul style="list-style-type: none"> <li>• Finish Dock</li> </ul>
Saturday, December 1, 2018	<ul style="list-style-type: none"> <li>• WC – Women (Run 1)</li> <li>• WC – Women (Run 2)</li> <li>• Team Relay</li> <li>• Awards</li> </ul>	<ul style="list-style-type: none"> <li>• 09:40</li> <li>• 11:05</li> <li>• 13:00</li> </ul>	<ul style="list-style-type: none"> <li>• Finish Dock</li> </ul>



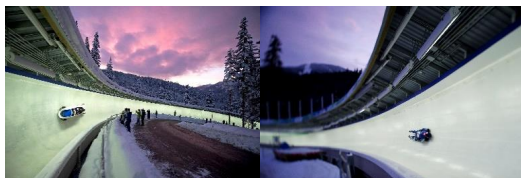
## Event Package Winter 2018/19

### Accommodation

The Whistler Athletes' Lodge was constructed to provide accommodation for teams visiting Whistler for training camps and competition events in both winter and summer. As an athlete/coach, a member of a sport organization you too can enjoy this 2010 Olympic Winter Games legacy!

The Whistler Athletes' Lodge is located in Cheakamus Crossing. The Lodge features 75 rooms containing 150 beds and a commercial kitchen and dining area for groups to enjoy home cooked meals.

- Complimentary wireless internet
- Fully accessible bathrooms are located on each floor, and are shared between two rooms.
- Complimentary laundry facilities and a common room perfect for relaxing or watching TV.
- Complimentary parking



### Whistler Sliding Centre

**Address:** 4910 Glacier Lane, Whistler, BC, Canada V0N 1B4  
**Guest/Sport Services:** 604-964-0040/ [tracktime@whistlersportlegacies.com](mailto:tracktime@whistlersportlegacies.com)  
**Web:** [www.whistlersportlegacies.com](http://www.whistlersportlegacies.com)

### "International Event and Training week" Package rates:

**Single occupancy** (Per Person) \$130.00(CDN)

**Double occupancy** (Per Person) \$106.00(CDN)

Rates include: Room, gym access and 3 meals per day

#### Rates include:

Room, gym access and 3 meals per day

**\*Blackout periods are in effect please contact for schedule of available training dates.**

#### Daily Tech Room Rates (Per night)

Skeleton, Luge, Bobsleigh storage \$45.00

- Free parking 100 m from the front door
- Secured storage available in the Lodge basement
- 15 km to Whistler Olympic Park / 9 km to the Whistler Sliding Centre
- 4 km to Whistler Creekside / 8 km to Whistler Village



# VISSMANN LUGE WORLD CUP

WHISTLER | 2018



## Program Summary

Enterprise Rent-A-Car has been a leader in the car rental industry for more than 60 years. We have established a solid reputation as the car rental companies of choice, with a strong commitment to deliver quality service to our customers.

**Account Name: Luge Canada World Cup**

**Contract ID: 5CALUGE**

**Click on the Logo to make your Enterprise reservation**



### Travel Policy

- Contract ID number as listed above must be used at the time of reservation and rental for rates, insurances, and other provisions to apply.
- Standard driver and credit rental qualifications apply. Minimum rental age at most locations is 21 for commercial travellers renting vehicles for business purposes.

CONFIDENTIAL. All information contained herein is the property of Enterprise Rent-A-Car. Any unauthorized use and/or disclosure is prohibited.





**Vehicle Rentals | Sales | Leasing**



DRIVING FORCE has 40 years of providing vehicle rentals, certified used car sales and leasing services to communities across Western Canada. With so many reasons for renting that vehicle, why not talk to the company that rents thousands of vehicles each year? We rent cars, light- and medium-duty trucks, vans, SUVs, cube vans and more with 28 locations to choose from.

We're expanding our commitment to community with an exciting new program designed to help our many non-profit business partners raise additional funds. The DF Partner Success program works with non-profit associations and charities to give a percentage of each vehicle rental booked online back to the association as additional revenue.

***To support please click on this link <https://www.drivingforce.ca/en/> and follow the instructions on line and entre the code provided.***

Our years of experience help us meet customer needs quickly, easily and specifically. Let us be YOUR transportation solutions provider.

***Here are the steps once on the DRIVING FORCE website.***

***Select a location***

***Select pick up and drop off dates. Times are required***

***Select age***

***Enter Customer Number: Leave Blank***

***Enter code: \_\_LUGE2018\_\_***

***Select continue without sign in***